



Trendswear Apparel Collection 2024

Partnering with you to activate your brand



TRENDSWEAR is designed for the Australasian market, with diverse sizing available in stylish retail colours to suit any customer or campaign.

- Designed in-house by an experienced apparel design team
- Seamless one-stop branding service
- Australasian sizing
- Extensive colour range



Design Principles

At the heart of TRENDSWEAR is a meticulous design process that directly addresses the needs of the dynamic Australasian market. Beyond fashion, the range is about comfort and adaptability – apparel that goes beyond fleeting, fast trends and becomes wardrobe staples for years to come.

Quality Assured

Well stocked and branded in-house in our New Zealand facility, the TRENDSWEAR range offers quality promotional apparel staples with premium branding at competitive prices.



STANDOUT BRANDING

TRENDSWEAR is supported by TRENDS' one-stop branding service, making it easy for you to find premium, affordable branding solutions to meet any brief.

ColourFlex® Transfer


Developed in-house, our dynamic Colourflex transfers offer detailed, full-colour branding that wears as well as it looks. Flexible and machine washable, these transfers will stand the test of time.



A close-up photograph of a dark navy blue t-shirt. Centered on the chest is an embroidered logo. The word "Olive" is in a large, stylized script font, with a small olive branch icon integrated into the letter 'O'. Below "Olive" are the words "AND CO" in a smaller, all-caps, sans-serif font. The embroidery has a textured, slightly raised appearance.

Embroidery

Our embroidery service creates three-dimensional, eye-catching artwork that becomes a permanent part of your TRENDWEAR apparel, elevating both the garment and your brand.

A photograph of a person wearing a light blue t-shirt. The t-shirt features a large screen print design in white. At the top, the words "BELIEVE IN" are printed in a clean, sans-serif font, flanked by horizontal lines. Below this, the word "YOUR" is printed in a large, bold, sans-serif font, with a background of diagonal hatching. At the bottom, the word "Self" is printed in a large, flowing, cursive script font.

Screen Print

Our screen printing service offers affordable, single and multi-colour artwork across large branding areas, making it an appealing option for branding on a budget.

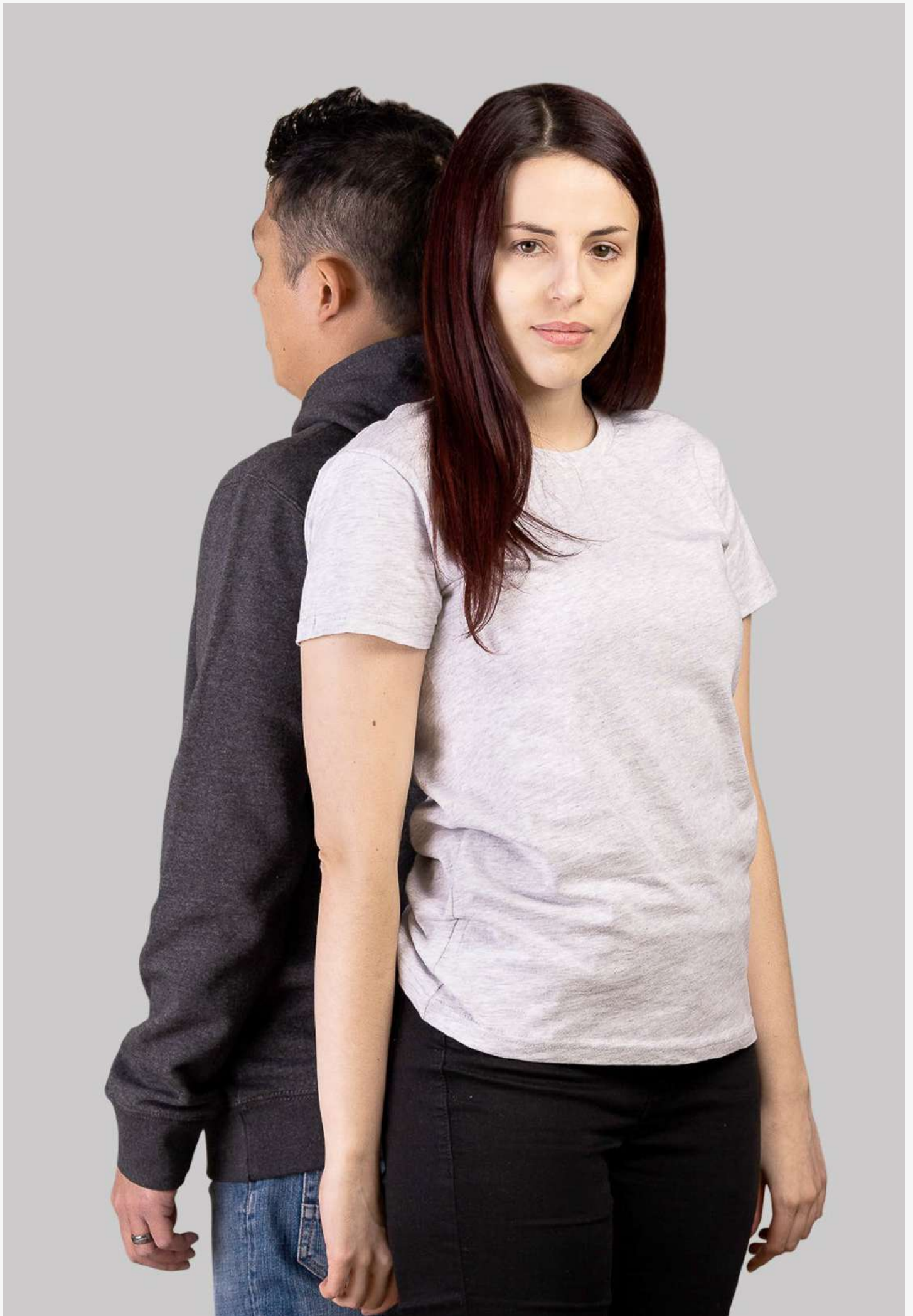


DESIGN PRINCIPLES

When creating and designing the range, our primary focus was on delivering quality, comfortable, long-lasting apparel.

We firmly believe that promotional apparel should receive the same attention to detail as retail apparel design. Careful consideration is given to selecting fabrics to ensure each garment offers a suitable range of colours, textures, and fabric weights.

This meticulous approach guarantees that our products are purpose-built and have the potential to become wardrobe staples for years to come.





SUNRISE



THE DESERT

Original T-Shirt

121391 - Women's
121390 - Men's

- Versatile t-shirt made from 180gsm combed cotton
- Ribbed knit collar with comfortable bias binding
- Cover stitched hem and cuffs

Branding Options:

- Screen Print • Colourflex® Transfer • Embroidery



| Women's | XS | S | M | L | XL | XXL | 3XL |
|---------------|------|------|------|------|------|------|------|
| Half Chest cm | 45.5 | 48 | 50.5 | 53 | 55.5 | 58 | 60.5 |
| Length cm | 64.5 | 65.5 | 66.5 | 67.5 | 68.5 | 69.5 | 70.5 |

| Men's | XS | S | M | L | XL | 2XL | 3XL | 4XL |
|---------------|----|----|----|----|----|------|-----|------|
| Half Chest cm | 44 | 48 | 52 | 56 | 60 | 64 | 68 | 72 |
| Length cm | 71 | 74 | 77 | 80 | 83 | 84.5 | 86 | 87.5 |





Carmen T-Shirt

122457- Women's
122455 - Men's

- Stylish 180gsm t-shirt made from 60% cotton and 40% polyester
- Ribbed knit collar with comfortable bias binding
- Wider, scooped neckline and curved hem
- Cover stitched hem and cuffs

Branding Options:

- Screen Print • Colourflex® Transfer • Embroidery



| Women's | XS | S | M | L | XL | 2XL | 3XL |
|---------------|------|------|------|------|------|------|------|
| Half Chest cm | 45.5 | 48 | 50.5 | 53 | 55.5 | 58.5 | 60.5 |
| Length cm | 65.5 | 66.5 | 67.5 | 68.5 | 69.5 | 70.5 | 71.5 |

| Men's | XS | S | M | L | XL | 2XL | 3XL | 4XL |
|---------------|----|----|----|----|----|------|-----|------|
| Half Chest cm | 44 | 48 | 52 | 56 | 60 | 64 | 68 | 72 |
| Length cm | 72 | 75 | 78 | 81 | 84 | 85.5 | 87 | 88.5 |





Viva T-Shirt

122454 - Women's
122453 - Men's

- Comfortable t-shirt made from 180gsm combed cotton
- V-neck ribbed knit collar with comfortable bias binding
- Cover stitched hem and cuffs

Branding Options:

- Screen Print • Colourflex® Transfer • Embroidery



| Women's | XS | S | M | L | XL | 2XL | 3XL |
|---------------|------|------|------|------|------|------|------|
| Half Chest cm | 45.5 | 48 | 50.5 | 53 | 55.5 | 58 | 60.5 |
| Length cm | 64.5 | 65.5 | 66.5 | 67.5 | 68.5 | 69.5 | 70.5 |

| Men's | XS | S | M | L | XL | 2XL | 3XL | 4XL |
|---------------|----|----|----|----|----|------|-----|------|
| Half Chest cm | 44 | 48 | 52 | 56 | 60 | 64 | 68 | 72 |
| Length cm | 71 | 74 | 77 | 80 | 83 | 84.5 | 86 | 87.5 |





Element T-Shirt

122452 - Unisex
123611 - Youth

- Versatile t-shirt made from 150gsm combed cotton
- Ribbed knit collar with comfortable bias binding
- Cover stitched hem and cuffs
- Available in unisex and youth sizing

Branding Options:

- Screen Print • Colourflex® Transfer • Embroidery



| Unisex | XS | S | M | L | XL | 2XL | 3XL | 4XL |
|---------------|----|----|----|----|----|------|-----|------|
| Half Chest cm | 44 | 48 | 52 | 56 | 60 | 64 | 68 | 72 |
| Length cm | 68 | 71 | 74 | 77 | 80 | 81.5 | 83 | 84.5 |



| Youth | 6 | 8 | 10 | 12 | 14 | 16 |
|---------------|----|----|----|----|----|----|
| Half Chest cm | 36 | 39 | 42 | 45 | 48 | 51 |
| Length cm | 50 | 54 | 58 | 62 | 66 | 70 |





Agility Sports T-Shirt

124724 - Women's
124723 - Men's

- Lightweight sports tee made from 180gsm polyester mesh fabric
- Stitched hem and cuffs
- Raglan sleeves facilitate easy movement
- Fast-drying and breathable, perfect for activewear

Branding Options:

- Screen Print • Colourflex® Transfer



| Women's | XS | S | M | L | XL | 2XL | 3XL |
|---------------|------|----|------|----|------|-----|------|
| Half Chest cm | 45.5 | 48 | 50.5 | 53 | 55.5 | 58 | 60.8 |
| Length cm | 65 | 66 | 67 | 68 | 69 | 70 | 71 |

| Men's | XS | S | M | L | XL | 2XL | 3XL | 4XL |
|---------------|------|------|------|------|------|-----|------|-----|
| Half Chest cm | 44 | 48 | 52 | 56 | 60 | 64 | 68 | 72 |
| Length cm | 71.5 | 74.5 | 77.5 | 80.5 | 83.5 | 85 | 86.5 | 88 |





Agility Sports Tank

124721 - Women's
124720 - Men's

- Lightweight tank made from 180gsm polyester mesh fabric
- Bias binding on armholes and collar
- Fast-drying and breathable, perfect for activewear

Branding Options:

- Screen Print • Colourflex® Transfer



| Women's | XS | S | M | L | XL | 2XL | 3XL |
|---------------|------|------|------|------|------|------|------|
| Half Chest cm | 41 | 43.5 | 46 | 48.5 | 51 | 53.5 | 56 |
| Length cm | 65.5 | 66.5 | 67.5 | 68.5 | 69.5 | 70.5 | 71.5 |

| Men's | XS | S | M | L | XL | 2XL | 3XL | 4XL |
|---------------|------|------|------|------|------|-----|------|-----|
| Half Chest cm | 43 | 46 | 49 | 52 | 55 | 58 | 61 | 64 |
| Length cm | 62.5 | 66.5 | 68.5 | 71.5 | 74.5 | 76 | 77.5 | 79 |





Relay Tank

122461 - Women's
122460 - Men's

- Quality tank made from 150gsm combed cotton
- Jersey bias binding on the collar and armholes

Branding Options:

- Screen Print • Colourflex® Transfer • Embroidery



| Women's | XS | S | M | L | XL | 2XL | 3XL |
|---------------|------|------|------|------|------|------|------|
| Half Chest cm | 41 | 43.5 | 46 | 48.5 | 51 | 53.5 | 56 |
| Length cm | 65.5 | 66.5 | 67.5 | 68.5 | 69.5 | 70.5 | 71.5 |

| Men's | XS | S | M | L | XL | 2XL | 3XL | 4XL |
|---------------|------|------|------|------|------|-----|------|-----|
| Half Chest cm | 43 | 46 | 49 | 52 | 55 | 58 | 61 | 64 |
| Length cm | 63.5 | 66.5 | 69.5 | 72.5 | 75.5 | 77 | 78.5 | 80 |





Harlow Long Sleeve Crew

122459 - Women's
122458 - Men's

- Smart long-sleeved crew
- Made from 180gsm combed cotton jersey knit
- Ribbed collar with comfortable bias binding
- Cover stitched hem and cuffs

Branding Options:

- Screen Print • Colourflex® Transfer • Embroidery



| Women's | XS | S | M | L | XL | 2XL | 3XL |
|---------------|------|------|------|------|------|------|------|
| Half Chest cm | 45.5 | 48 | 50.5 | 53 | 55.5 | 58 | 60.5 |
| Length cm | 64.5 | 65.5 | 66.5 | 67.5 | 68.5 | 69.5 | 70.5 |

| Men's | XS | S | M | L | XL | 2XL | 3XL | 4XL |
|---------------|----|----|----|----|----|------|-----|------|
| Half Chest cm | 44 | 48 | 52 | 56 | 60 | 64 | 68 | 72 |
| Length cm | 71 | 74 | 77 | 80 | 83 | 84.5 | 86 | 87.5 |





Rugby Jersey

124718 - Unisex

- Comfortable and smart rugby-inspired jersey made from 280gsm interlocking cotton fabric
- Comfortable twill collar
- Concealed two-button placket
- Ribbed colour-matched cuffs

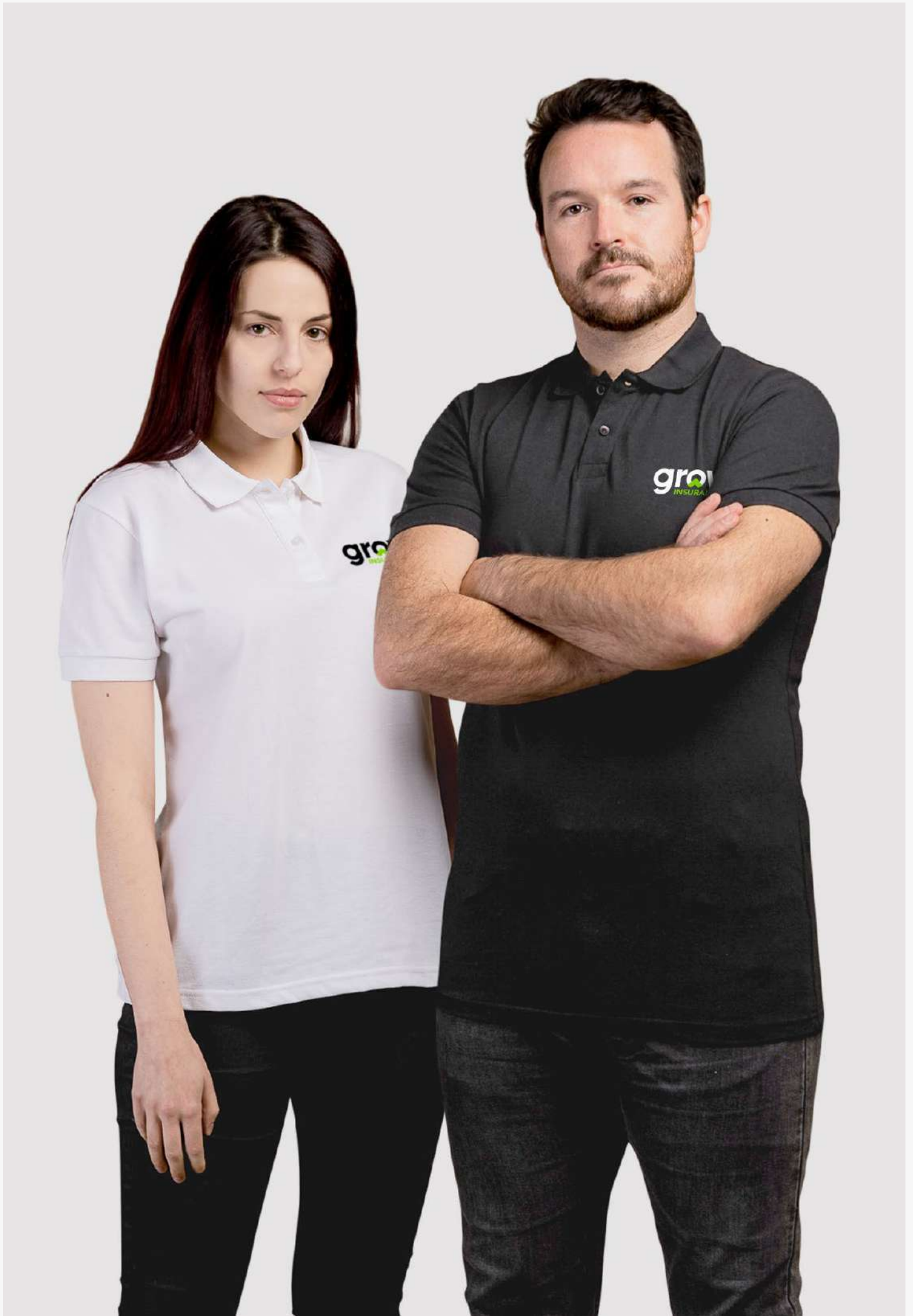
Branding Options:

- Screen Print • Colourflex® Transfer • Embroidery



| Unisex | XS | S | M | L | XL | 2XL | 3XL | 4XL |
|---------------|------|------|------|------|------|-----|------|-----|
| Half Chest cm | 45 | 49 | 53 | 57 | 61 | 65 | 69 | 73 |
| Length cm | 71.5 | 74.5 | 77.5 | 80.5 | 83.5 | 85 | 86.5 | 88 |





Carter Polo

121636 - Women's
121635 - Men's

- Smart pique knit polo shirt
- 60% combed cotton / 40% polyester
- Ribbed collar and cuffs
- Two-button placket with spare button included
- Perfect for corporate or casual wear

Branding Options:

- Screen Print • Colourflex® Transfer • Embroidery



| Women's | XS | S | M | L | XL | 2XL | 3XL |
|---------------|------|------|------|------|------|------|------|
| Half Chest cm | 46.5 | 49 | 51.5 | 54 | 56.5 | 59 | 61.5 |
| Length cm | 63.5 | 64.5 | 65.5 | 66.5 | 67.5 | 68.5 | 69.5 |

| Men's | XS | S | M | L | XL | 2XL | 3XL | 4XL |
|---------------|------|------|------|------|------|-----|------|-----|
| Half Chest cm | 45 | 49 | 53 | 57 | 61 | 65 | 69 | 73 |
| Length cm | 70.5 | 73.5 | 76.5 | 79.5 | 82.5 | 84 | 85.5 | 87 |





Williams Polo

124733 - Women's
124732 - Men's

- Quality 200gsm women's polo shirt with subtle coloured accents
- Made from a 60/40 blend of cotton and polyester pique knit
- Soft knitted cuffs and collar with a two-button placket
- Reinforcing tape on neck and shoulders

Branding Options:

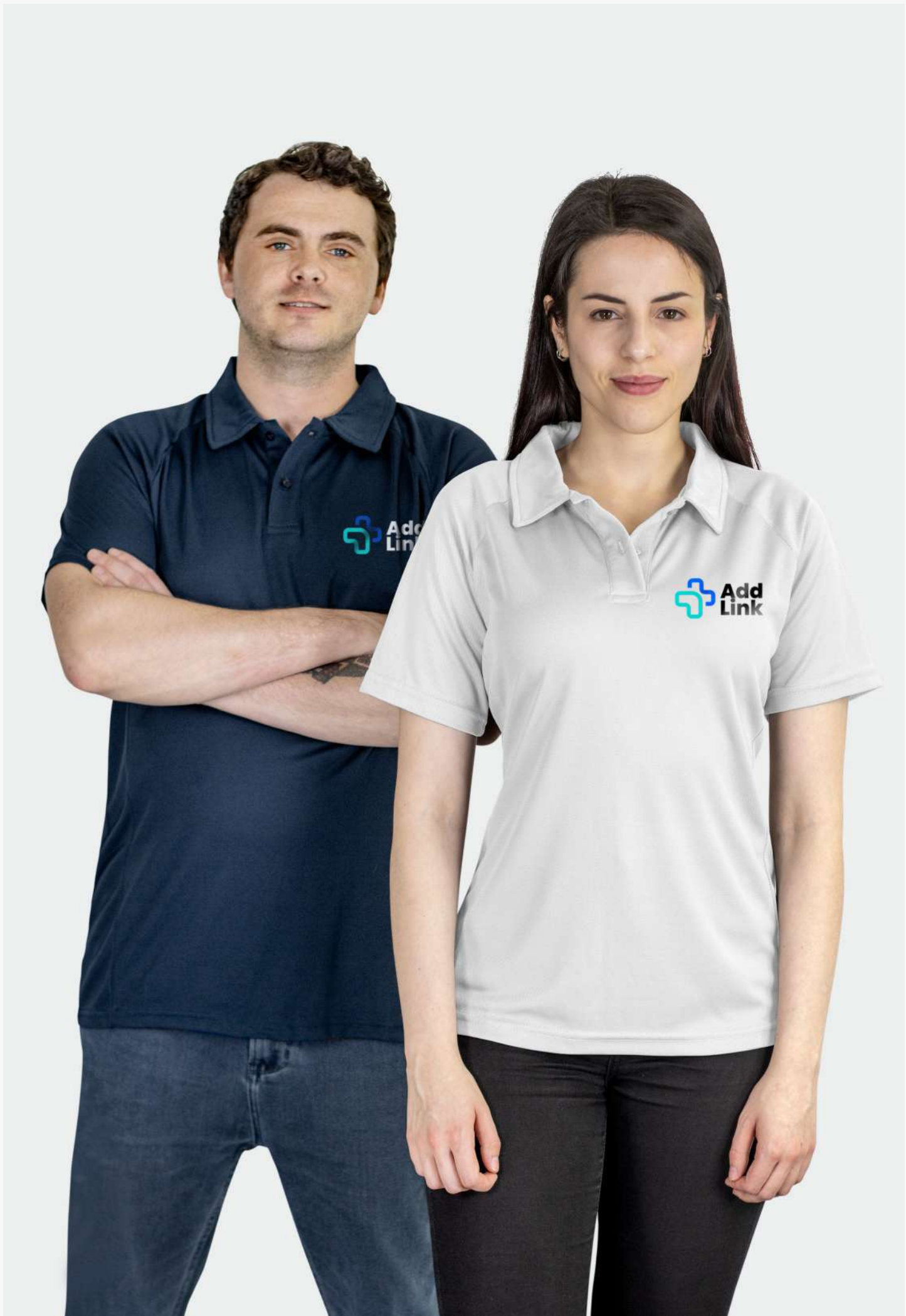
- Screen Print • Colourflex® Transfer • Embroidery



| Women's | XS | S | M | L | XL | 2XL | 3XL |
|---------------|------|------|------|------|------|------|------|
| Half Chest cm | 46.5 | 49 | 51.5 | 54 | 56.5 | 59 | 61.5 |
| Length cm | 63.5 | 64.5 | 65.5 | 66.5 | 67.5 | 68.5 | 69.5 |

| Men's | XS | S | M | L | XL | 2XL | 3XL | 4XL |
|---------------|------|------|------|------|------|-----|------|-----|
| Half Chest cm | 45 | 49 | 53 | 57 | 61 | 65 | 69 | 73 |
| Length cm | 70.5 | 73.5 | 76.5 | 79.5 | 82.5 | 84 | 85.5 | 87 |





Ace Performance Polo

122047 - Women's
122046 - Men's

- High-performance polo shirt
- Made from 180gsm pique knit polyester
- Lightweight, moisture-wicking and quick dry
- Two-button placket with soft collar
- Raglan sleeves and side panels

Branding Options:

- Screen Print • Colourflex® Transfer • Embroidery



| Women's | XS | S | M | L | XL | 2XL | 3XL |
|---------------|------|------|------|------|------|------|------|
| Half Chest cm | 46.5 | 49 | 51.5 | 54 | 56.5 | 59 | 61.5 |
| Length cm | 63.5 | 64.5 | 65.5 | 66.5 | 67.5 | 68.5 | 69.5 |

| Men's | XS | S | M | L | XL | 2XL | 3XL | 4XL |
|---------------|------|------|------|------|------|-----|------|-----|
| Half Chest cm | 45 | 49 | 53 | 57 | 61 | 65 | 69 | 73 |
| Chest cm | 70.5 | 73.5 | 76.5 | 79.5 | 82.5 | 84 | 85.5 | 87 |





Parker Poplin Shirt

123608 - Women's
123607 - Men's

- Premium cut and sewn 120gsm poplin shirt
- 98% combed cotton / 2% elastane
- Seven button placket and single button cuffs
- Classic collar

Branding Options:

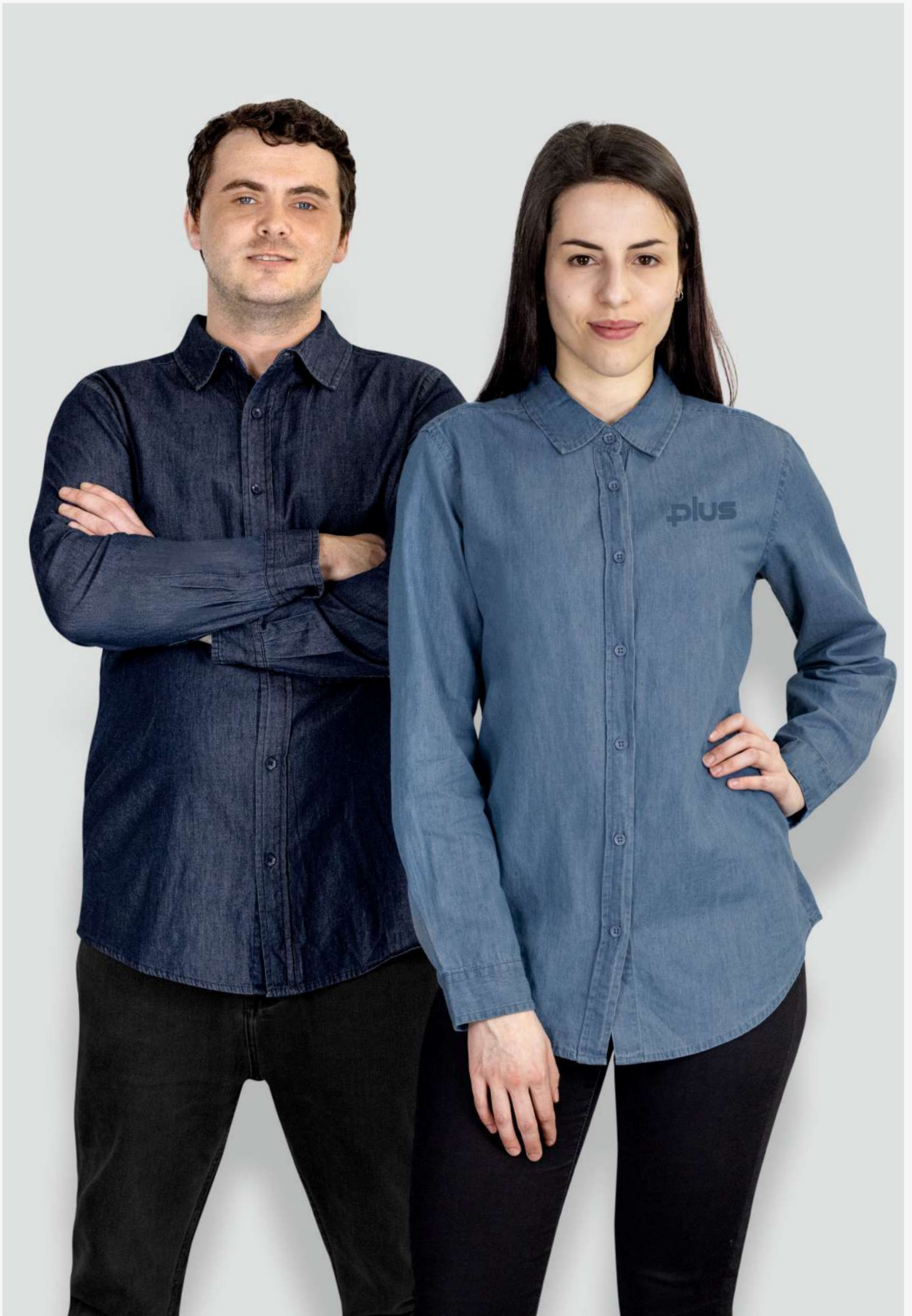
- Embroidery



| Women's | XS | S | M | L | XL | 2XL | 3XL |
|---------------|------|------|------|------|------|------|------|
| Half Chest cm | 48 | 50.5 | 53 | 55.5 | 58 | 60.5 | 63 |
| Length cm | 68.5 | 69.5 | 70.5 | 71.5 | 72.5 | 73.5 | 74.5 |

| Men's | XS | S | M | L | XL | 2XL | 3XL | 4XL |
|---------------|------|------|------|------|------|-----|------|-----|
| Half Chest cm | 48 | 52 | 56 | 60 | 64 | 68 | 72 | 76 |
| Length cm | 72.5 | 75.5 | 78.5 | 81.5 | 84.5 | 86 | 87.5 | 89 |





Chester Denim Shirt

123610 - Women's
123609 - Men's

- Stylish cut and sewn 150gsm denim shirt
- Made from 100% lightly faded cotton denim
- Seven button placket and single button cuffs
- Classic collar and back yoke

Branding Options:

- Embroidery



| Women's | XS | S | M | L | XL | 2XL | 3XL |
|---------------|------|------|------|------|------|------|------|
| Half Chest cm | 48 | 50.5 | 53 | 55.5 | 58 | 60.5 | 63 |
| Length cm | 68.5 | 69.5 | 70.5 | 71.5 | 72.5 | 73.5 | 74.5 |

| Men's | XS | S | M | L | XL | 2XL | 3XL | 4XL |
|---------------|------|------|------|------|------|-----|------|-----|
| Half Chest cm | 48 | 52 | 56 | 60 | 64 | 68 | 72 | 76 |
| Length cm | 72.5 | 75.5 | 78.5 | 81.5 | 84.5 | 86 | 87.5 | 89 |





Studio Hoodie

121133 - Unisex

- Comfortable and versatile 280gsm hoodie
- 80% combed cotton / 20% polyester
- Soft brushed fleece lining for added warmth
- Jersey-lined hood with shoelace drawstrings
- Ribbed cuffs and hem
- Reinforcing neck tapes
- Kangaroo pocket

Branding Options:

- Screen Print • Colourflex® Transfer • Embroidery



| Unisex | XS | S | M | L | XL | 2XL | 3XL | 4XL |
|---------------|----|----|----|----|----|-----|-----|-----|
| Half Chest cm | 49 | 52 | 55 | 58 | 61 | 64 | 67 | 70 |
| Length cm | 68 | 71 | 74 | 77 | 80 | 81 | 82 | 83 |





Fairmount Hoodie

124719 - Unisex

- Versatile 280gsm unisex hoodie with contrasting white panel
- Made from an 80/20 blend of combed cotton and polyester
- Brushed fleece interior for cosy feel and extra warmth
- Ribbed cuff and hem with flat drawstring
- Kangaroo pocket

Branding Options:

- Screen Print • Colourflex® Transfer • Embroidery



| Unisex | XS | S | M | L | XL | 2XL | 3XL | 4XL |
|---------------|----|----|----|----|----|-----|-----|-----|
| Half Chest cm | 49 | 52 | 55 | 58 | 61 | 64 | 67 | 70 |
| Length cm | 68 | 71 | 74 | 77 | 80 | 81 | 82 | 83 |





Classic Sweatshirt

121132 - Unisex

- Comfortable and versatile 280gsm sweatshirt
- 80% combed cotton / 20% polyester
- Soft brushed fleece lining for added warmth
- Set-in sleeves and neck tape reinforcement
- Topstitched detailing at neckline

Branding Options:

- Screen Print • Colourflex® Transfer • Embroidery



| Unisex | XS | S | M | L | XL | 2XL | 3XL | 4XL |
|---------------|----|----|----|----|----|-----|-----|-----|
| Half Chest cm | 47 | 52 | 55 | 58 | 61 | 64 | 67 | 70 |
| Length cm | 68 | 71 | 74 | 77 | 80 | 81 | 82 | 83 |





Jasper Hoodie

121131 - Unisex

- Versatile 280gsm zippered hoodie
- 80% combed cotton / 20% polyester
- Soft brushed fleece lining for added warmth
- Jersey-lined hood with shoelace drawstrings
- Ribbed cuffs and hem
- Reinforced twill tape neckline
- Split kangaroo pocket

Branding Options:

- Screen Print • Colourflex® Transfer • Embroidery



| Unisex | XS | S | M | L | XL | 2XL | 3XL | 4XL |
|---------------|----|----|----|----|----|-----|-----|-----|
| Half Chest cm | 49 | 52 | 55 | 58 | 61 | 64 | 67 | 70 |
| Length cm | 68 | 71 | 74 | 77 | 80 | 81 | 82 | 83 |





Camden Quarter Zip

123156 - Unisex

- Cozy and versatile 280gsm quarter-zip polycotton pullover
- 80% combed cotton / 20% polyester
- Soft brushed fleece lining
- Reinforced neckline, ribbed cuffs and hem
- Sewn-in loop for retail tags

Branding Options:

- Screen Print • Colourflex® Transfer • Embroidery



| Unisex | XS | S | M | L | XL | 2XL | 3XL | 4XL |
|---------------|----|----|----|----|----|-----|-----|-----|
| Half Chest cm | 49 | 52 | 55 | 58 | 61 | 64 | 67 | 70 |
| Length cm | 68 | 71 | 74 | 77 | 80 | 81 | 82 | 83 |





Haven Sweatpants

123712 - Unisex

- Comfortable and versatile 280gsm unisex sweatpants
- Made from an 80/20 blend of combed cotton and polyester
- Brushed fleece interior for cosy feel and extra warmth
- Ribbed ankle cuffs and waistband
- Adjustable drawstring and two pockets

Branding Options:

- Colourflex® Transfer • Embroidery



| Unisex | XS | S | M | L | XL | 2XL | 3XL | 4XL |
|---------------|------|------|------|------|------|------|------|------|
| Half Waist cm | 32.5 | 35.5 | 38.5 | 41.5 | 44.5 | 47.5 | 50.5 | 53.5 |
| Inseam cm | 74.5 | 75.5 | 76 | 76.5 | 77.5 | 78.5 | 79 | 79.5 |





Rift Cap

123374

- Premium 5-panel cap made from heavy brushed cotton
- Pre-curved peak
- One size fits most
- Embroidered eyelets and a sweatband
- Adjustable velcro closure

Branding Options:

- Colourflex® Transfer • Embroidery



Faded Cap

111453

- Stylish 6-panel cap made from faded heavy brushed cotton
- Pre-curved peak
- One size fits most
- Embroidered eyelets and a sweatband
- Adjustable velcro closure

Branding Options:

- Colourflex® Transfer • Embroidery



Catalyst Cap

119457

- Low profile 5-panel cap made from heavy brushed cotton
- Flat peak
- One size fits most
- Metal eyelets and a sweatband
- Adjustable velcro closure

Branding Options:

- Screen Print • Colourflex® Transfer • Embroidery



Corduroy Cap

200235

- Hard-wearing 6-panel corduroy cap
- Pre-curved peak
- One size fits most
- Adjustable velcro closure and a sweatband

Branding Options:

- Embroidery



Anchor 6 Panel Cap

121795

- Premium 6-panel cap made from polyester felt
- Pre-curved peak with a natural cork finish
- One size fits most
- Embroidered eyelets and a sweatband
- Adjustable closure with a smart brass buckle

Branding Options:

- Colourflex® Transfer • Embroidery





Bondi Bucket Hat

115438

- Premium bucket hat made from heavy brushed cotton
- Material provides excellent UPF50 sun protection
- Available in three sizes kids, small and large
- Metal eyelets and a sweatband

Branding Options:

- Screen Print • Colourflex® Transfer • Embroidery



Reversible Bucket Hat

121548

- Premium reversible bucket hat made from heavy brushed cotton
- Available in two sizes that will fit most
- Tear away care label

Branding Options:

- Colourflex® Transfer



Reversible Ripstop Bucket Hat

124711

- Reversible bucket hat made from 100gsm ripstop nylon
- Water-resistant material
- Tear-away label
- Available in two sizes that will fit most

Branding Options:

- Colourflex® Transfer



Faded Bucket Hat

120416

- Premium bucket hat made from faded heavy brushed cotton
- Available in two sizes that will fit most, including kids
- Gunmetal eyelets and a sweatband

Branding Options:

- Screen Print • Colourflex® Transfer • Embroidery



Juniper Tie Dye Bucket Hat

125085

- Premium bucket hat made from 100% cotton twill
- Stylish contrasting tie dye design
- Available in two sizes that will fit most
- Includes a sweatband

Branding Options:

- Colourflex® Transfer • Embroidery



Fiordland Bucket Hat

125084

- Premium plaid bucket hat made from brushed polyester
- Available in two sizes that will fit most
- Includes a sweatband

Branding Options:

- Colourflex® Transfer • Embroidery



Yuma Bucket Hat

126092

- Premium wide-brim bucket hat made from 100% cotton twill
- Adjustable woven chin strap with safety breakaway clip
- Metal eyelets and a sweatband
- Available in three sizes that will fit most, including kids

Branding Options:

- Colourflex® Transfer • Embroidery



Beverley Denim Bucket Hat

120366

- Premium denim bucket hat with a sweatband
- Available in two sizes that will fit most people

Branding Options:

- Screen Print • Colourflex® Transfer • Embroidery



Madura Corduroy Bucket Hat

120365

- Stylish bucket hat made from hard-wearing corduroy
- Available in two sizes which will fit most people
- Includes a sweatband

Branding Options:

- Embroidery





Everest Beanie

109118 - Unisex

125573 - Youth

- Warm knitted beanie
- Knitted from acrylic yarn
- Roll up cuff
- Available in unisex and youth sizing
- One size fits most

Branding Options:

- Embroidery

Unisex



Youth



Nebraska Cable Knit Beanie

110834 - Unisex

- Stylish cable knit beanie
- Knitted from acrylic yarn
- One size fits most

Branding Options:

- Embroidery



Galway Waffle Beanie

120949 - Unisex

- Stylish waffle knit beanie
- Knitted from acrylic yarn
- Roll up cuff
- One size fits most

Branding Options:

- Embroidery





Bumble Beanie

123011 - Unisex

- 100% acrylic double knit beanie
- Soft and durable fit with a cuff and pom pom
- One size fits most

Branding Options:

- Embroidery



Heather Beanie

119459 - Everest Heather Beanie

119458 - Heather Slouch Beanie

- Warm beanie made using heather-style acrylic yarn
- Roll up cuff
- Slouch-style beanie knitted from heather-style acrylic yarns
- One size fits most

Branding Options:

- Embroidery

Everest Heather Beanie



Heather Slouch Beanie



Snowflake Beanie

123073

- Comfortable acrylic knit beanie
- Double knit and speckled material to create texture
- One size fits most

Branding Options:

- Embroidery





www.activeprint.co.nz

Register online for full pricing



Full Pricing

Available online at activeprint.co.nz
Register now!



Guaranteed

Your satisfaction is assured, with our 3 Way Guarantee.



Free Freight

No more additional freight costs!
Free freight offer is to one address in all main towns and cities nationwide. Additional freight services such as overnight, rural and split deliveries are available.



Free Samples

There is nothing like getting your hands on a sample.

We are more than happy to send you samples of our products for you to inspect obligation free. Samples valued over \$30 we ask you to return them to us.



Free Artwork Visual

Send us your logo and we'll show you how it can look branded on these products!



Free Setup

Clear pricing with no hidden costs.



0800 26 26 22



sales@activeprint.co.nz



www.activeprint.co.nz